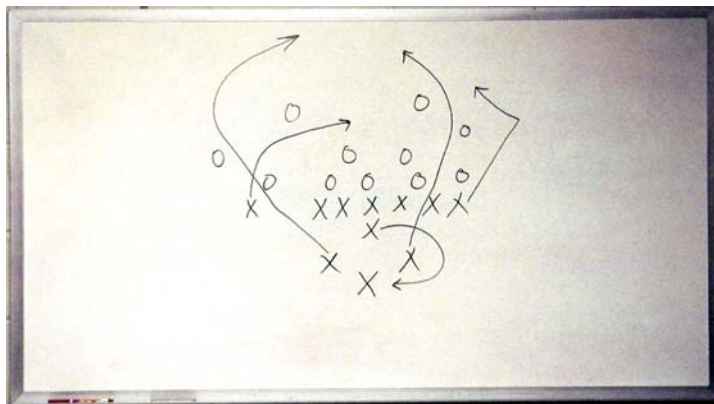


# SAFEST CAPITAL CITY TEAM



# 2010 PLAYBOOK



## The Mission

To build a comprehensive, multifaceted coalition of community members called the "Safest Capital City Team" in an effort to reduce crime and substance abuse in Topeka/Shawnee County.

## The Goal

Compete with cities population 100,000 to 200,000 and to become the Safest Capital City in America.

## The Method

- Target specific crime and substance abuse issues
- Develop strategies to address these issues utilizing multiple efforts (plays)
- Increase participation in the Safest Capital City team by encouraging community involvement.

## Coaching Team

Barry Feaker	President	354.1744, ext.315	bfeaker@aol.com
Richard Kline	Vice President	291.5000, ext.6601	richard.kline@snco.us
DeAnn Escalante	Secretary	274.3393	deanne@brewsterplace.org
Sally Zellers	Safe Streets	266.4606	szellers@safestreets.org
Lynn Smith	Safe Streets	266.4606	lsmith@safestreets.org
<u>Offensive/Prevention Coordinator</u>			
Lynn Smith		266.4606	lsmith@safestreets.org
<u>Defensive/Correction Redirection Coordinator</u>			
Terry Hund		296.8543	terryhu@kdoc.dc.state.ks.us

## Safe Streets Staff

Sally Zellers	Director	szellers@safestreets.org
Judy Wilson	Office Coordinator	jwilson@safestreets.org
Kelly Hall	Grant Coordinator	khall@safestreets.org
Irene Caballero	Community Mobilizer	icaballero@safestreets.org
Lynn Smith	Youth Development Coordinator/ Community Mobilizer	lsmith@safestreets.org

Phone: 266.4606  
Fax: 266.3833  
2209 SW 29th Street  
Topeka, Kansas 66611  
www.safestreets.org

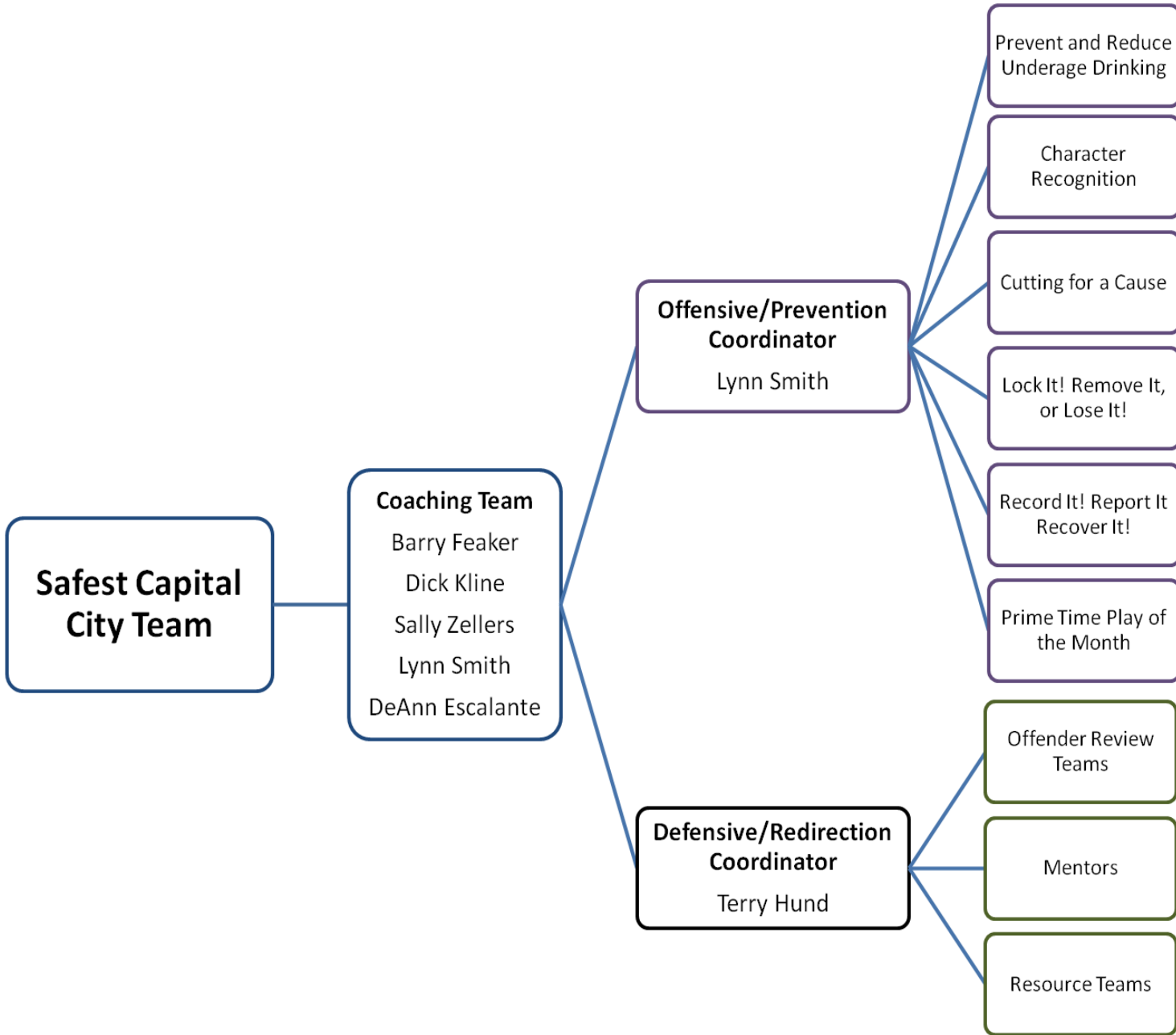
“Every Successful Team has a Good Playbook, a Good **Offense** and a Good **Defense**.”

### **Offense = Prevention**

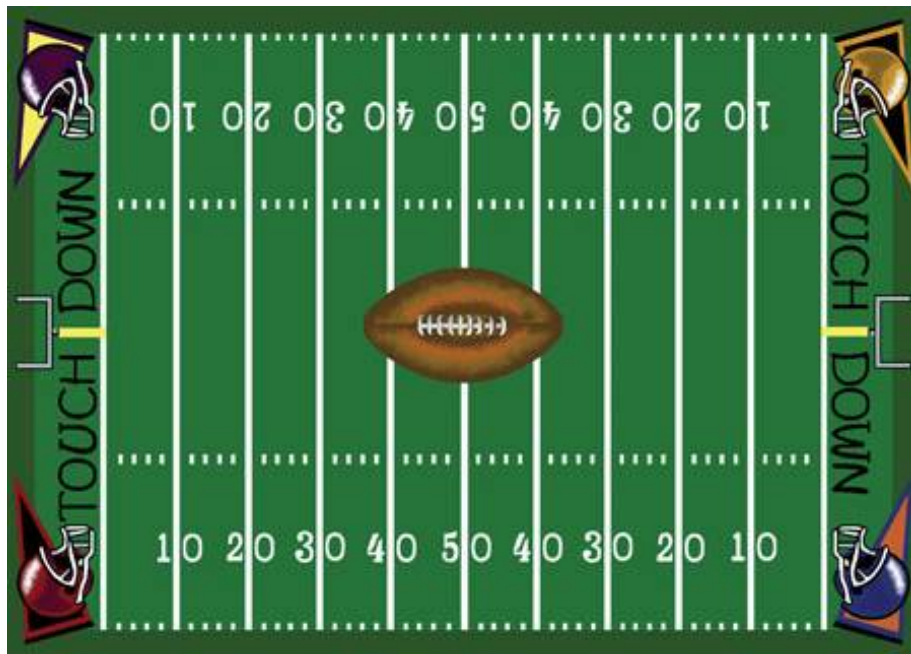
We have the ball, attempting to score points by decreasing crime and substance abuse before the problem starts.

### **Defense = Correction and Redirection**

The other Team (the criminal) has the ball, thus crime increases. We attempt to get the ball back, defending our community from crime by enforcing the law and attempting to connect offenders to positive mentors and helpful community resources.



# 2010 Active Coalition Plays



# OFFENSIVE PLAYS



Character Recognition  
Cutting for a Cause  
Lock it, Remove it, or Lose it  
Prevent and Reduce Underage Drinking  
Prime Time Play of the Month  
Record It! Report It! Recover It!

Cindy Patton  
David Proffitt  
Toni Shenk  
Eve Kendall  
Ron Brown  
Risë Quinn

## **Play Name: Character Recognition**

### **Play Description:**

Safe Streets in conjunction with Topeka City of Character recognizes Champions of Character in the community who demonstrate good character that significantly improves the health, safety or quality of life of the community.

### **State Reason for this play:**

Positive reinforcement of community action that improves the health, safety and quality of life in the community. Because of the media support we have received, we think this also provides examples for others to follow in how they might make the community a safer, healthier place.

### **Target Group:**

Open to anyone in Shawnee County to nominate or receive the recognition.

### **Target Area demographics:**

Shawnee County

### **Time Frame to run play:**

Recognize citizens at the monthly Safe Streets meeting.

### **Resources needed to run play:**

- Character nomination committee to process nominations
- Nomination forms – already printed, but we do need to print new forms with new address to receive nominations
- Character recognition certificates printed on Microsoft Publisher forms.
- Continued support from Character Recognition Council made up of government dignitaries, who make the recognition something special to receive. We may need to recruit additional members of the Character Recognition Council.

### **Desired or Projected outcomes:**

Cooperation between Police and citizens, improvement in health and safety of the community.

**Play Coordinator/Quarterback:** Cindy Patton

**Contact info. Phone:** 273.4330

**E-mail:** topekacityofcharacter@gmail.com

## Active Coalition Play

### **Play Name: Cutting for a Cause**

#### Play Description:

Cut down tall grass and weeds at abandoned and blighted homes

#### State Reason for this play:

Prevent illegal activity from occurring at blighted and abandoned homes

#### Target Group:

Different neighborhoods in need

#### Target Area demographics:

Helping NIAs and the overall health of Topeka neighborhoods

#### Time Frame to run play:

The second Saturday of the month for as long as people can contribute

#### Resources needed to run play:

We will need mowers, weed eaters, gas, volunteers, permission to get on owners properties

#### Desired or Projected outcomes:

Increase the overall health of Topeka neighborhoods

Play Coordinator/Quarterback: David Proffitt

Contact info. Phone: 354.1744

E-mail: dadproffitt2@aol.com

## Active Coalition Play

### **Play Name: Lock it, Remove it, or Lose it**

#### Play Description:

Dissemination of the “Lock it, Remove it, or Lose it” window clings to all Shawnee County businesses and places that vehicles would be parked without attendance. To provide a continuous reminder through media outlets, reminding residents and visitors to lock their vehicle and remove items from visibility in the vehicle.

#### State Reason for this play:

To decrease the number of vehicle break-ins throughout Shawnee County over a sustainable time period.

#### Target Group:

Shawnee County businesses, retail centers, hotels, restaurants, movie theatres, faith communities, and basically anywhere that they would have to leave car unattended in Shawnee County.

#### Target Area demographics:

Shawnee County Citizens and visitors to Shawnee County

#### Time Frame to run play:

Continually to keep the public aware of the importance of protecting their vehicles and their belongings in those vehicles

#### Resources needed to run play:

- Safe Streets Coalition Business team volunteers to continue to develop strategies and materials to get the message out to public and to businesses in Shawnee County.
- Monetary or in-kind donations to print materials for distribution.
- Media support to encourage the importance that citizens and visitors take in reducing vehicle break-ins by taking measures to protect themselves.

#### Desired or Projected outcomes:

A continual decrease in vehicle break-ins in Shawnee County over a sustainable time period, and the increased awareness of the public to the importance of the part that they play in making this possible.

Play Coordinator/Quarterback: Toni Shenk

Contact info. Phone: 271.0351

E-mail: [ToniLShenk@coldwellbanker.com](mailto:ToniLShenk@coldwellbanker.com)

## **Play Name: Prevent and Reduce Underage Drinking**

### **Play Description:**

Representatives of the coalition's 12 teams (media, business, law enforcement, government, education, parent, youth, faith-based, civic/volunteer, youth serving organizations, healthcare, and others involved in reducing substance abuse) serve on the Underage Drinking Task Force, collaboratively implementing Shawnee County's comprehensive community plan for preventing and reducing underage drinking.

### **State Reason for this play:**

In 2009, Kansas Communities That Care School (KCTC) survey for Shawnee County, of the youth in 6th, 8th, 10th, and 12th grade, 28.10% report using alcohol within the last 30-days with 15.40% report binge drinking (5 or more drinks at one setting) within the last two weeks. Underage drinking is illegal and leads to a host of other social problems: truancy, assault, battery, high school-drop out, teen pregnancy, theft, property crimes, DUIs, domestic violence, rape, suicide, addictions, murder, etc.

### **Target Group:**

Youth ages eleven to eighteen (6<sup>th</sup> – 12<sup>th</sup> grade)

### **Target Area demographics:**

Shawnee County

### **Time Frame to run play:**

Implementation began January 1, 2009. This is a three and a half year project.

### **Resources needed to run play:**

Involvement of:

- Safe Streets Coalition/Team representatives/Underage Drinking Task Force
- Community partners
- State Block Grant, Drug Free Communities Grant, City/County dollars
- Monetary contributions, and in-kind donations

### **Desired or Projected outcomes:**

- Reduce youth access to alcohol, change social norms, change local programs, policies and practices, and increase underage drinking enforcement.
- 6% reduction in the number of youth in Shawnee County that use alcohol.

**Play Coordinator/Quarterback:** Eve Kendall, Shawnee County Juvenile Detention Center

**Contact info. Phone:** 785.233.6459 x7702      **E-mail:** Eve.Kendall@snco.us

## Active Coalition Play

### **Play Name: Prime Time Play of the Month**

#### Play Description:

To promote Safe Streets plays in the community on a monthly basis and featuring them in the media by formulating press releases and news articles in the print, radio, and television media. We will also create a speakers bureau that can be utilized by speaking to local civic groups and organizations in the community.

#### State Reason for this play:

To promote Safe Streets' initiatives and enhance awareness of plays and projects used by the Safe Streets Coalition.

#### Target Group:

Citizens of Topeka/Shawnee County

#### Target Area demographics:

Shawnee County

#### Time Frame to run play:

All year

#### Resources needed to run play:

Participating media outlets, public information officers and members of the speakers bureau

#### Desired or Projected outcomes:

Community awareness and promotion of the Safest Capital City campaign and crime/substance abuse reduction

Play Coordinator/Quarterback: Ron Brown

Contact info. Phone: 295.3735

E-mail: [rbrown3@topeka.k12.ks.us](mailto:rbrown3@topeka.k12.ks.us)

**Play Name: Record It! Report It! Recover It!**

**Play Description:**

This play is designed to increase public awareness of the importance of recording serial numbers of products you buy, reporting the crime if a burglary occurs, and assist in the recovery and return of stolen property. Invis-ID kits, pens, decals, inventory sheets and stickers will be distributed to neighborhood organizations to encourage marking of valuables. A special emphasis will be placed on reaching car audio stores, electronics retailers, secondhand dealers, and pawn shops to encourage their involvement with the initiative.

**State Reason for this play:**

Property crimes such as car thefts, and residential burglaries are particularly troublesome and erode the confidence of Topeka citizens to live and shop in Topeka. Less than 1% of recovered property is appropriately marked.

**Target Group:**

Citizens, car audio owners, neighborhood organizations.

**Target Area demographics:**

Topeka and Shawnee County

**Time Frame to run play:**

Program Kick-off is scheduled for May 1.

**Resources needed to run play:**

- 100 Invis-ID kits
- 150 brochure stands
- 14 LED-UV lights
- 20,000 brochures
- Approximately 2000-3000 Invis-ID pens at a cost of \$2 each are needed along with a sponsorship.
- 3000 to 4000 decals and 30,000 to 40,000 stickers.
- Personnel needed to distribute kits, attend neighborhood meetings, and conduct presentations.
- Media – TV, radio, billboards

**Desired or Projected outcomes:**

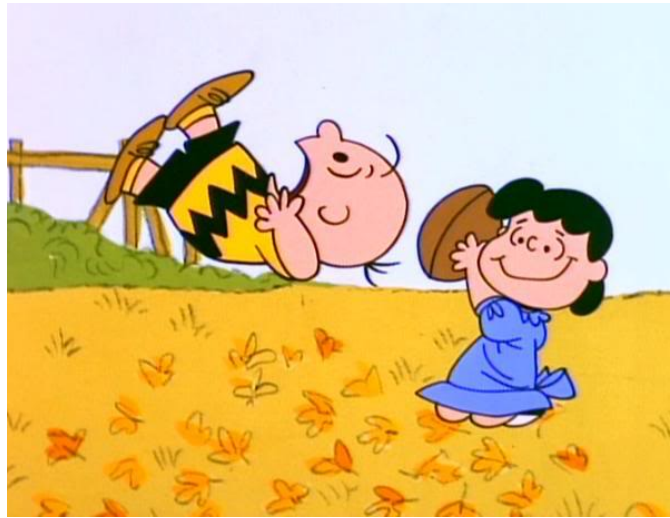
- Increase in the recovery of stolen property
- Identify persons selling stolen property
- Placing a higher emphasis on property crimes
- Increase number of citizens marking their belongings

**Play Coordinator/Quarterback:** Risë Quinn

**Contact info. Phone:** 969.9123

**E-mail:** riseq@lowermech.com

# DEFENSIVE PLAYS



Breaking the Cycle

Terry Hund

**Play Name: Breaking the Cycle**

**Play Description:**

An offender review team will identify up to 20 individuals re-entering Shawnee County from the corrections system. The play will identify interventions, match offenders with positive mentors and community resources in an effort to “break the cycle” of committing crime.

**State Reason for this play:**

To decrease the high number of business and residential burglaries committed by individuals frequently identified as committing multiple crimes in our community and reduce reoccurring incarcerations.

**Target Group:**

Offenders re-entering the community

**Target Area demographics:**

Shawnee County

**Time Frame to run play:**

Begin January 2010 to establish and train volunteer teams and start working with offender teams by July, 2010

**Resources needed to run play:**

Volunteers  
Meeting space

**Desired or Projected outcomes:**

Reduce crime, decrease recidivism and assist anti-social individuals to become law abiding citizens.

**Play Coordinator/Quarterback:** Terry Hund

**Contact info. Phone:** 296.8543

**E-mail:** terryHu@doc.ks.gov

## **2010 Active Community Plays**

Citizen Patrol Coalition (CPC)	Fred Martinez
Complete Streets	Jim Ogle
National Night Out Against Crime (NNO)	Jon Michaels
Neighborhood Watch	Sally Zellers
North Central Topeka NIA	Deb Dunkin
Operation Hot Wheels	Detective Kenny Eaton
Project Butterfly	Debbie Guilbault
Retailers Association	Sandie Bayless
Safe Property Training Program	Lynn Smith
TXT 4 \$	Jim Ogle

## **Plays on Hold**

Just the Facts!  
Proactively Preventing Theft  
Topeka Safest Capital City Team - Facebook Groups  
When Push Comes to Shove: Finding Solutions to Bullying Behavior

## **Completed Plays**

Communities Empowering Youth to End Youth Crime in Shawnee County  
Crime Data Reporting  
Hot Pocket  
Law Enforcement Youth Advisory Council  
Non Profit Agency Safety Awareness Training  
Oprah's Big Give Topeka  
Sentence Guidelines Reform

## 2010 Active Community Plays

Citizen Patrol Coalition (CPC)

Complete Streets

National Night Out Against Crime (NNO)

Neighborhood Watch

North Central Topeka NIA

Operation Hot Wheels

Property Butterfly

Retailers Association

Safe Property Training Program

TXT 4\$

Fred Martinez

Jim Ogle

Jon Michaels

Sally Zellers

Deb Dunkin

Detective Kenny Eaton

Debbie Guilbault

Sandie Bayless

Lynn Smith

Jim Ogle

## Active Community Play

**Play Name:** Citizen Patrol Coalition of Topeka, Shawnee County Inc. (CPC)

**Play Description:**

Citizens Patrol Coalition of Topeka-Shawnee County is established to provide a framework for a collaborative effort between and among neighborhoods participating in voluntary citizen patrols. CPC in collaboration with the Topeka Police Department, Shawnee County Sheriff's Office and Safe Streets offers a four-hour training program for the citizens of Topeka, and Shawnee County. This program helps citizens to know what to look for while on patrol. Their duty is to observe and document what they see as suspicious activity while on patrol and notify law enforcement.

**State Reason for this play:**

To organize the people on patrol, to make Topeka and Shawnee County a safer place to live and work. To improve the safety of the neighborhoods and to help law enforcement cut crime in our city and county. The more citizen patrollers mean more crime deterrent on the streets.

**Target Group:**

All citizens of Topeka and Shawnee County

**Target Area demographics:**

Topeka and Shawnee County

**Time Frame to run play:**

CPC meetings are held on the first Tuesday of the month at the Law Enforcement Center, 320 S. Kansas at 7:00 p.m.

**Resources needed to run play:**

Volunteers, law enforcement

CPC has applied for a 501 (c) (3) (Accomplished), monetary or in-kind donations are needed for equipment and uniforms. There is no paid staff on the CPC.

**Desired or Projected outcomes:**

To have certified patrollers in every neighborhood of Topeka, and in every development in Shawnee County. By doing this, Topeka and Shawnee County could become the Safest Capital City.

**Play Coordinator/Quarterback:** Fred Martinez

**Contact info.** Phone: 267.1377, Cell: 633.5146 E-mail: fred\_freddy@sbcglobal.net

## Active Community Play

**Play Name:** Complete Streets!

**Play Description:**

By implementing design principles for streets and sidewalks that value all modes of use equally (walking, bike-riding, disability assisted, autos and public transportation), we can make our streets more useful, more used, and help drive down crime.

**State Reason for this play:**

Criminals don't like working a neighborhood where people are out and about. By designing streets that encourage people to be out walking or riding rather than just driving, we make our neighborhoods less vulnerable to crime.

**Target Group:**

The Shawnee County Commission, the city councils of Topeka, Rossville and Silver Lake, the school boards, and the people of Shawnee County.

**Target Area demographics:**

All ages

**Time Frame to run play:**

December 2009

**Resources needed to run play:**

In Topeka, voters have provided the resources with the half-cent sales tax for road and sidewalk repair. The goal is to use these "complete streets" design principles in conducting that work. In most communities, that means that the governing body passes a "complete streets policy" as a guide to its planners and engineers who guide the road and street efforts.

**Desired or Projected outcomes:**

- Well designed streets and sidewalks that utilize these principles lower crime through citizen eyes and ears in their neighborhoods.
- Our neighborhoods are more useful.
- Our neighborhoods are aesthetically appealing.
- Our population is healthier because the design encourages, rather than discouraging, exercise.
- Our children are safe to walk to school

**Play Coordinator/Quarterback:** Jim Ogle, Heartland Healthy Neighborhoods

**Contact info:** Phone: 785.580.6992 E-mail: [jim.ogle@wibw.com](mailto:jim.ogle@wibw.com),  
[www.completestreets.org](http://www.completestreets.org)

## Active Community Play

**Play Name:** National Night Out Against Crime (NNO)

**Play Description:**

National Night Out Against Crime is an annual event celebrated through out the country. Topeka/Shawnee County neighborhoods participate in the national celebration by holding local events ranging from barbecues to carnivals. The events celebrate neighborhoods' year-long commitment to preventing crime and enhancing the safety of the community.

**State Reason for this play:**

NNO is designed to:

- Heighten crime and drug prevention awareness
- Generate support for, and participation in, local anti-crime programs
- Strengthen neighborhood spirit and police-community partnerships
- Send a message to criminals letting them know that neighborhoods are organized and fighting back!

**Target Group:**

Everyone from children to seniors

**Target Area demographics:**

Residents of all neighborhoods in the Topeka and Shawnee County

**Time Frame to run play:**

Planning is done through out the year with monthly meetings held at Safe Streets. The event will be held on August 7, 2010.

**Resources needed to run play:**

Resources needed span from cash donations to food supplies and volunteers. \$200 goes to each neighborhood that registers. The Topeka Police Dept and Shawnee County Sheriff's Office provide these funds for supplies; i.e., hot dogs, buns, ice cream, etc. Additional resources are solicited from local business and agencies.

**Desired or Projected outcomes:**

Organizing and empowering neighborhoods to help prevent crime, drug activity and to enhance the health and safety of our neighborhoods.

**Play Coordinator/Quarterback:** Jon Michaels

**Contact info. Phone:** 913.515.6609

**E-mail:** nnotopeka@gmail.com

## Active Community Play

Play Name: Neighborhood Watch

### Play Description:

Neighborhood Watch is designed to target specific geographical areas and to assist neighbors in:

- establishing an organizational structure and creating a communication system (e-mail/phone trees)
- creating social ties
- teaching neighbors to be proactive by preventing crime and recognizing and reporting criminal activity
- bringing together multiple partners to form a team
- empowering neighbors to have a strong unified voice for change

### State Reason for this play:

Reduce crime and build healthier neighborhoods by organizing and empowering citizens to design a safe place to live and work.

### Target Group:

All neighborhoods in Topeka/Shawnee County

### Target Area demographics:

Topeka/Shawnee County

### Time Frame to run play:

Year round

### Resources needed to run play:

Volunteers, Law Enforcement, Safe Streets staff

Neighborhood Watch signs, brochures, prevention packets on various safety strategies, window clings, crime stats, maps and phone packets

### Desired or Projected outcomes:

Organized neighborhood watches in every neighborhood in Shawnee County

Play Coordinator/Quarterback: Sally Zellers, Safe Streets

Contact info. Phone: 266.4606

E-mail: [szellers@safestreets.org](mailto:szellers@safestreets.org)

## Active Community Play

Play Name: North Central Topeka NIA

Play Description:

Organize North Central Topeka Improvement Association

State Reason for this play:

Improve North Topeka

Target Group:

East Topeka (North Central)

Target Area demographics:

Everyone –businesses, homeowners, renters, and landlords

Time Frame to run play:

One year to solid involvement

Resources needed to run play:

Need more people involved and better advertising

Desired or Projected outcomes:

Reduce crime rates and increase property values

Play Coordinator/Quarterback: Katrina Bayless

Contact info. Phone: 233.2436

E-mail: [katrinabayless@sbcglobal.net](mailto:katrinabayless@sbcglobal.net)

## Active Community Play

**Play Name:** Operation Hot Wheels

**Play Description:**

A media campaign to heighten public awareness of stolen vehicles and to solicit support from the public to assist in locating stolen vehicles.

**State Reason for this play:**

To recover vehicles stolen in Topeka and Shawnee County and to increase public awareness of stolen vehicles.

**Target Group:**

The general public

**Target Area demographics:**

Shawnee County and the surrounding area.

**Time Frame to run play:**

On going initiative with stolen vehicles being showcased on area TV stations on a weekly basis.

**Resources needed to run play:**

Topeka Police Auto Theft Detectives and area media outlets.

**Desired or Projected outcomes:**

Heightened awareness of vehicle thefts and a higher rate of recovery of stolen vehicles and apprehension of those who steal motor vehicles.

**Play Coordinator/Quarterback:** Detective Kenny Eaton

**Contact info. Phone:** 368.9031      **E-mail:** keaton@topeka.org

## Active Community Play

Play Name: Project Butterfly

### Play Description:

For people involved in prostitution, the Topeka AIDS Project, in collaboration with Topeka Police Department, offers on-going support and resources such as HIV testing, support groups, serves as a resource to make referrals for education and employment opportunities, mental, physical and dental health referrals, substance abuse treatment and housing.

### State Reason for this play:

To reduce prostitution activities in the city, thereby reducing crime.

### Target Group:

Individuals involved in sex work or those soliciting such individuals.

### Target Area demographics:

City limits of Topeka

### Time Frame to run play:

Meetings are held as needed to work with individuals and address situations and possible improvements.

### Resources needed to run play:

- Personnel: Topeka Police Department officers and Project Butterfly associated staff; Topeka AIDS Project's Project Butterfly associated staff.
- Monetary for photo IDs for individuals, co-payments for medications, dental visits, etc
- Case Manager, looking for funding for this position
- Transportation; i.e., bus passes, cab fare, donated cars
- Meaningful employment opportunities for participants

### Desired or Projected outcomes:

- Will protect public health of City of Topeka
- Reduce crime associated with prostitution
- Sex workers will have access to services so they can leave their life on the streets behind them.

Play Coordinator/Quarterback: Dawn Maendele, Topeka Police Department,  
CVAU Coordinator  
Debbie Guilbault, Topeka AIDS Project, Executive Dir.

Contact info. Phone: 368.9064  
232.3100

E-mail: dmaendele@topeka.org  
debbiegulbault@topekaaidsproject.org

## Active Community Play

**Play Name:** Retailers Association

**Play Description:**

Safe Streets Coalition members, law enforcement and business loss prevention officers meet to address the latest theft, forgery and shoplifting incidents plaguing local businesses.

**State Reason for this play:**

The networking amongst the various entities involved and the information shared facilitates quicker identification of trends affecting our area. This forum also provides tools for improved results with apprehensions and preventions of theft.

**Target Group:**

Businesses in Shawnee County

**Target Area demographics:**

Shawnee County

**Time Frame to run play:**

Meetings are held on the second Wednesday of each month at 6:30 p.m. at the Safe Streets office, 2209 SW 29th Street.

**Resources needed to run play:**

- Information to share (i.e., pictures, intelligence, video, etc.)
- Neutral meeting location
- Method for dissemination of information between meetings (phone tree, emails, etc.)
- Loss prevention officers
- Law enforcement
- Safe Streets

**Desired or Projected outcomes:**

Safe Streets' objective is to "link" business leaders with current and local crime trends as well as the information, resources and tools needed to deter criminal activity and help protect customers and employees.

**Play Coordinator/Quarterback:** Sandie Bayless

**Contact info.** Safe Streets Phone: 266.4606 E-mail:

## Active Community Play

**Play Name:** Safe Property Management Training Program

**Play Description:**

Safe Streets, in collaboration with the Topeka Police Department, offers an eight hour training program for landlords. This program helps landlords gain knowledge on meth labs and current drug trends, screening tenants, housing and nuisance codes, leases and evictions, and Crime Prevention Through Environmental Design (CPTED). CPTED includes information about the design of your building or home, locks, lighting, bushes/trees and fencing.

**State Reason for this play:**

To address complaints of increased illegal activity and code issues in rental properties and to assist in preventing the decline in property values in the neighborhoods.

**Target Group:**

Apartment managers/owners and landlords

**Target Area demographics:**

Shawnee County

**Time Frame to run play:**

Meetings are held quarterly.

**Resources needed to run play:**

- Personnel: Safe Streets staff, Topeka Police Department, Housing and Credit Counseling, and an attorney.
- Monetary or in-kind donations are needed for printing, postage, certificates, name tags, and refreshments.

**Desired or Projected outcomes:**

- Increase awareness about the importance of screening tenants and how it can help deter crime on their property.
- Connect apartment managers/owners and landlords to resources in the community to help them keep their property safe.
- Develop rapport with law enforcement.

**Play Coordinator/Quarterback:** Lynn Smith, Safe Streets

**Contact info. Phone:** 266.4606

**E-mail:** lsmith@safestreets.org

## Active Community Play

Play Name: TXT 4 \$

**Play Description:**

Establish a mobile texting service to take crime tips. Blanket high crime areas with information on text code to enable people to send tips.

**State Reason for this play:**

Create an additional communication link that makes it easier for those who see crimes to get information to police without risking that they come forward individually.

**Target Group:**

Young adult males and females in high crime areas

**Target Area demographics:**

Males and Females 18-34

**Time Frame to run play:**

May 1 – UFN (until further notice)

**Resources needed to run play:**

Raise \$ for billboard printing.

**Desired or Projected outcomes:**

Increased tips to CrimeStoppers, dramatic drop in crime in targeted areas.

Play Coordinator/Quarterback: Jim Ogle

Contact info. Phone: 272.6397

E-mail: [jim.ogle@wibw.com](mailto:jim.ogle@wibw.com)

## Plays on Hold

Just the Facts!

Proactively Preventing Theft

Topeka Safest Capital City Team – Facebook Groups

When Push Comes to Shove: Finding Solutions to Bullying Behavior

## Play on Hold

**Play Name:** Just the Facts!

**Play Description:**

Assemble data from relevant agencies, for example, Police, Sheriff's Office, Department of Corrections (DOC), etc., as well as geographical information systems (GIS) and other information such as census data. Relate this data in meaningful ways to better understand the community and possible impacts and ramifications of other plays implemented by Safe Streets Coalition.

**State Reason for this play:**

Gaining a better data-driven understanding of our community allows us to base our efforts on factual information and improves our chances of targeting the correct populations in the right locations.

**Target Group:**

The information would be available to the entire community. However, the primary, initial audience is members of the Safe Streets Coalition.

**Target Area demographics:**

Safe Streets Coalition members and anyone else who has an interest in the information.

**Time Frame to run play:**

Initial collection and compilation of data will take several months. Analysis and addition of new or updated data will be ongoing and frequently based on a specific need.

**Resources needed to run play:**

- Some data already located at Topeka and Shawnee County Public Library
- Data from local, regional and national sources such as Police, DOC, etc.
- Computing resources to maintain information
- Personnel to analyze the data

**Desired or Projected outcomes:**

Provide as much data as possible to support other plays run by Safe Streets Coalition and to allow those plays to make data based decisions when needed.

**Play Coordinator/Quarterback:**

Contact info. Phone:

E-mail:

## Play on Hold

**Play Name:** Proactively Preventing Theft

**Play Description:**

An interactive PowerPoint presentation intended to educate the targeted group of our two initiatives. Dissemination of the “Lock It!, Remove It!, or Lose It!” t-shirts and “Record It, Report It, and Recover It” Invis-ID pens and inventory sheets.

**State Reason for this play:**

To empower the targeted group with providing them the knowledge and tools to help decrease the number of vehicle break-ins and property theft incidents throughout Shawnee County

**Target Group:**

High School Students (14-18 years of age)

**Target Area demographics:**

Shawnee County High School students

**Time Frame to run play:**

Fall semester 2009 – 1 presentation per high school within Shawnee County

**Resources needed to run play:**

- Permission to approve and schedule presentations at the seven area high schools: Topeka High, Topeka West, Highland Park, Washburn Rural, Shawnee Heights, Hayden and Seaman
- 70 Invis-ID pens to distribute to a school representative (10 per school)
- 1,750 Invis-ID brochures to distribute to a school representative (250 per school)
- 105 Lock It! Remove It! or Lose It! t-shirts to distribute to audience (15 per school)
- Safe Streets Team Volunteers to attend presentation(s)
- Media coverage of event

**Desired or Projected outcomes:**

- Topeka’s youth promoting the two initiatives to their peers, parents, and neighbors
- Decrease the number of vehicle break-ins
- Increase the number of citizens marking their property
- Increase the number of stolen property items recovered

**Play Coordinator/Quarterback:**

Contact info. Phone:

E-mail:

## Play on Hold

**Play Name:** Topeka Safest Capital City Team-Facebook Groups

**Play Description:**

- Create a Safe Streets Facebook Group to where all Safe Streets Coalition members as well as the general public can join. We can keep members apprised of what is happening with Safe Streets, and can also put out all of the crime prevention tips, etc. and use as a means of educating the general public on safety in Topeka.
- Create a Safe Streets Facebook Group for Topeka Youth in conjunction with Play #21, group created for youth by youth.

**State Reason for this play:**

To create a means for communication between Safe Streets Coalition members on plays, and also as a way to continue to reach out to the public. The Topeka network on Facebook has over 77,000 members, and that includes all demographics. Facebook has become “the way” to communicate and keep up with each other’s lives. Business people are using it to network, families are using it to keep in touch, and youth are using it as a way of communication and self expression.

**Target Group:**

Two Parts

- Youth Facebook users to be in conjunction with Play #21, will create a youth based Facebook group.
- Adult Facebook users on Topeka Network

**Target Area demographics:**

All Facebook users in Topeka Network

**Time Frame to run play:**

Summer and Fall of 2009 from inception and will run for however long that is deemed appropriate and there is the manpower to administer the two Facebook groups.

**Resources needed to run play:**

Time, computer access and a Facebook administrator

**Desired or Projected outcomes:**

Continuing education of youth and adults in the Facebook Topeka network on keeping Topeka safe.

**Play Coordinator/Quarterback:** Adult Safe Streets Facebook

Hopefully can find some youth to help quarterback on the Youth Safe Streets Facebook

**Contact info. Phone:**

**E-mail:**

## Play on Hold

**Play Name:** When Push Comes to Shove: Finding Solutions to Bullying Behavior

### Play Description:

This play would pull together a youth advisory group and a coalition of community representatives to share resources and support in eliminating bullying behavior throughout the Topeka community. Recommendations from a recent conference on finding solutions to bullying behavior include the following:

- Increase community awareness that bullying behavior occurs in many different settings, including the workplace and neighborhoods.
- Institute awareness/education programs for children and families in all levels of school settings and community programs on appropriate responses to bullying behavior.
- Involve youth in developing policy and planning initiatives that develop a community response to bullying behavior.

### State Reason for this play:

Bullying behavior impacts the Topeka community, its systems, workplace environments, neighborhoods, and its citizens from birth to grave. Experts recognize five types of bullying behavior: physical, verbal, emotional, sexual and cyberbullying. The Communities Empowering Youth Partnership hosted a conference to find solutions to bullying behavior on January 30, 2009. The conference planners and attendees included students, school administrators and nine youth-serving non-profit organizations. The organizations were: Topeka Youth Project, Kansas Community Mediation Services, Odyssey Group–TREC, Successful Connections, Prairie Advocacy Center, TDC Learning Centers, Topeka Center for Peace and Justice, KCSL Family Resource Center and Kansas Children's Service League serves as the lead agency. These agencies are committed to work with members of Safe Streets in keeping this issue high on the list for public concern by promoting solutions identified by the attendees at the conference.

### Target Group:

Youth, systems, workplace settings and all citizens of Shawnee County.

### Target Area demographics:

Shawnee County

### Time Frame to run play:

Ongoing

### Resources needed to run play:

Communities Empowering Youth Partnership agencies are seeking community support to promote appropriate responses to bullying behavior, and funds to continue their work in serving the populations mentioned above in implementing solutions for bullying behavior.

### Desired or Projected outcomes:

- Youth and parents will recognize bullying behavior in children and will learn what to do.
- Schools and the community will have better input and support for actions to address bullying
- The Community will have the resources it needs to respond to bullying issues.

### Play Coordinator/Quarterback:

Contact info. Phone:

E-mail:

## Completed Plays

Communities Empowering Youth to End Youth Crime in Shawnee County  
Crime Data Reporting  
Hot Pocket  
Law Enforcement Youth Advisory Council  
Non Profit Agency Safety Awareness Training  
Oprah's Big Give Topeka  
Sentence Guidelines Reform

## Completed Play

**Play Name:** Communities Empowering Youth To End Youth Crime in Shawnee County

**Play Description:**

Three conferences with resulting work plans. (1) A collaboration conference with individuals, agencies and systems that impact the lives of youth and families in our community. (2) A youth forum with youth and others committed to build on the results of the first conference with a youth perspective of what is needed to end youth crime in Shawnee County. (3) A youth-led conference that will empower youth and others to define and commit to a comprehensive community plan to end youth crime.

**State Reason for this play:**

Shawnee County Family Resource Center, the lead agency of a capacity-building grant, funded by the Department of Health and Human Services, has six agency partners committed to the prevention of youth violence, gang violence and child abuse and neglect. The partners are Topeka Youth Project, Topeka Center for Peace and Justice Mediation Programs, TDC Learning Centers, Successful Connections, Prairie Advocacy Center, and The Odyssey Group. A major goal of the capacity building grant is community engagement. The partnership will engage and support the community in providing the leadership necessary to demonstrate impact with ending youth crime in Shawnee County.

**Target Group:**

Community leaders, youth - ages ten to eighteen, families, agencies, organizations, businesses, funders, and systems that impact youth and their families.

**Target Area demographics:**

Shawnee County, Kansas

**Time Frame to run play:**

May 1, 2008 to September 30, 2009

**Resources needed to run play:**

A commitment to participate from community leaders, youth, families, individuals, agencies, organizations, systems, government, businesses, funders, policy makers, collaborations (i.e., Safe Streets), and visioning initiatives that want to make a difference for the youth in Shawnee County.

**Desired or Projected outcomes:**

A comprehensive community plan that will engage youth and all segments of the community in ending youth crime in Shawnee County. Specific outcomes will be tracked through the statistics collected by the Shawnee County Juvenile Intake and Assessment Center to demonstrate results in the reduction of youth crime.

**Play Coordinator/Quarterback:** January H. Scott, Consultant/Coach  
P.O. Box 5889, Topeka, KS 66606

**Contact Info:** Phone: 785.249-3759      E-mail: [jhscott99@aol.com](mailto:jhscott99@aol.com)

## Completed Play

**Play Name:** Crime Data Reporting

**Play Description:**

To provide timely reports of crime data to the Safe Streets Coalition and to notify Coalition members of crime trends occurring in Topeka.

**State Reason for this play:**

To determine if crime reduction efforts are effective and to advise the Coalition of criminal activity.

**Target Group:**

Residents of Topeka and Shawnee County

**Target Area demographics:**

Shawnee County

**Time Frame to run play:**

Continuous

**Resources needed to run play:**

Statistical data from the Crime Analyst. Staff reports on crime and criminal activity.

**Desired or Projected outcomes:**

Greater awareness of crime and criminal activity and statistical data that will help the Coalition measure crime prevention efforts.

**Play Coordinator/Quarterback:** Ron Brown

**Contact info. Phone:** 295.3735

**E-mail:** rbrown3@topeka.k12.ks.us

## Completed Play

**Play Name:** Hot Pocket

**Play Description:**

This play is designed to increase public awareness of 24/7 crisis resources in the community.

**State Reason for this play:**

Provide a pocket size resource list of service providers that will provide a safety net for citizens

**Target Group:**

Service providers and citizens of Topeka and Shawnee County

**Target Area demographics:**

Topeka and Shawnee County

**Time Frame to run play:**

Launch September 2008

**Resources needed to run play:**

Pocket resource cards

**Desired or Projected outcomes:**

Quick access of community resource information

**Play Coordinator/Quarterback:**

**Contact info. Phone:**

**E-mail:**

## Completed Play

**Play Name:** Law Enforcement Youth Advisory Council

**Play Description:**

The Chief of Police and Shawnee County Sheriff meet with area High School youth and discuss issues of importance to young people in the community. The Chief of Police and Sheriff listen to concerns, ask for input and advice and work with the youth to keep them informed of law enforcement initiatives in the community.

**State Reason for this play:**

To provide a voice to area youth on issues involving crime and criminal activity.

**Target Group:**

High School aged kids from Shawnee County.

**Target Area demographics:**

Shawnee County

**Time Frame to run play:**

Meetings are held bi-monthly or as scheduled by the Chief of Police/Sheriff.

**Resources needed to run play:**

Chief of Police (or his representative), Sheriff (or his representative), Safe Streets Youth Advisor and young people from the Shawnee County High Schools.

**Desired or Projected outcomes:**

Better understanding of area youth and their concerns in interacting with local law enforcement. Ideas and information on ways that law enforcement can interact with youth and enlist their support in crime reduction and safer communities.

**Play Coordinator/Quarterback:** Ron Brown

**Contact info. Phone:** 295.3735

**E-mail:** rbrown3@topeka.k12.ks.us

## Completed Play

**Play Name:** Non Profit Agency Safety Awareness Training

**Play Description:**

Targeting employees of non-profit agencies to provide safety awareness and information regarding prevention of crime.

**State Reason for this play:**

Survey identified need for safety training for non-profit employees.

**Target Group:**

Non-profit agencies

**Target Area demographics:**

Shawnee County

**Time Frame to run play:**

Continuous with training every two months

**Resources needed to run play:**

Trainers with expertise in subject matter; location; printed materials; promotional brochures

**Desired or Projected outcomes:**

Increased safety and awareness among non-profit agency employees and creating a network of non-profits to focus on safety and prevention

**Play Coordinator/Quarterback:**

Contact info. Phone:

E-mail:

## Completed Play

**Play Name:** Oprah's Big Give Topeka

**Play Description:**

This is an ABC/Oprah /KTKA initiative to help improve people's living conditions and enhance their lifestyles. Oprah donates \$10,000 to qualified ABC affiliates. It is the affiliates challenge to grow the initial investment and "pay it forward" to best meet the needs of members of their community.

**State Reason for this play:**

Cleaner, safer and well maintained homes and neighborhoods help to keep Topeka a safe city and a place where people are proud to call home. By helping to clean up five family's homes, we are helping to improve their life styles, make their neighborhood cleaner and safer and restore pride to their community and to the city of Topeka.

**Target Group:**

Families or individuals living at or below poverty level; families or individuals who may have a severe disability which prevents them from working or depletes their income, preventing them from maintaining their homes; the working poor.

**Target Area demographics:**

Topeka and surrounding areas; aka: Topeka DMA

**Time Frame to run play:**

April 7 to April 30, 2008

**Resources needed to run play:**

Volunteers to help with all aspects of repairing and cleaning up homes and yards; medical needs such as dental, hearing, handicapped needs; auto repairs; various other domestic, physical, medical or educational needs.

**Desired or Projected outcomes:**

To meet the needs of the first five families we have chosen to help. To keep in contact with families to make sure they are able to maintain the repairs to their homes and continue to provide support to help them improve their lives (education, medical assistance, etc.). Continue to collect donations so we can repeat the program in Spring of 2009.

**Play Coordinator:** KTKA TV

**Contact info.** Phone: 785.215.8550      E-mail:

**Play Contacts:**

KTKA TV, 2121 Chelsea Drive, Topeka, Kansas 66614, 785.273.4949

## Completed Play

**Play Name:** Sentence Guidelines Reform

**Play Description:**

Promoting reform legislation in the Kansas House and Senate. Currently under Kansas law, judges may depart from the guidelines set forth by the Legislature down to and including probation even for serious crimes. One new bill, would limit departures for the most serious crimes, or for those with the most serious criminal history. It would allow departures only for the reasons expressly stated in the law. The bill would not allow probation for crimes of extreme sexual violence and would not allow departures at all for such crimes without the agreement of the prosecutor. Other bills would review the guidelines with the goal of promoting criminal justice and public safety.

**State Reason for this play:**

The Kansas Sentencing Guidelines have had some unintended results in Kansas. We need to review the current law and explore ways we can promote criminal justice and protect the public.

**Target Group:**

Kansas

**Target Area demographics:**

General public

**Time Frame to run play:**

Four years

**Resources needed to run play:**

None

**Desired or Projected outcomes:**

Positive change in public policy

**Play Coordinator/Quarterback:**

Joe Patton

**Contact info. Phone:** 273.4330

**E-mail:** joepatton2001@msn.com

If you have an interest in creating a new play, please fill out the form below and send it to Lynn Smith at [lsmith@safeststreets.org](mailto:lsmith@safeststreets.org)

Safest Capital City  
Playbook

Play Name:

Play Description:

State Reason for this play:

Target Group:

Target Area demographics:

Time Frame to run play:

Resources needed to run play:

Desired or Projected outcomes:

Play Coordinator/Quarterback:

Contact info. Phone:

E-mail: